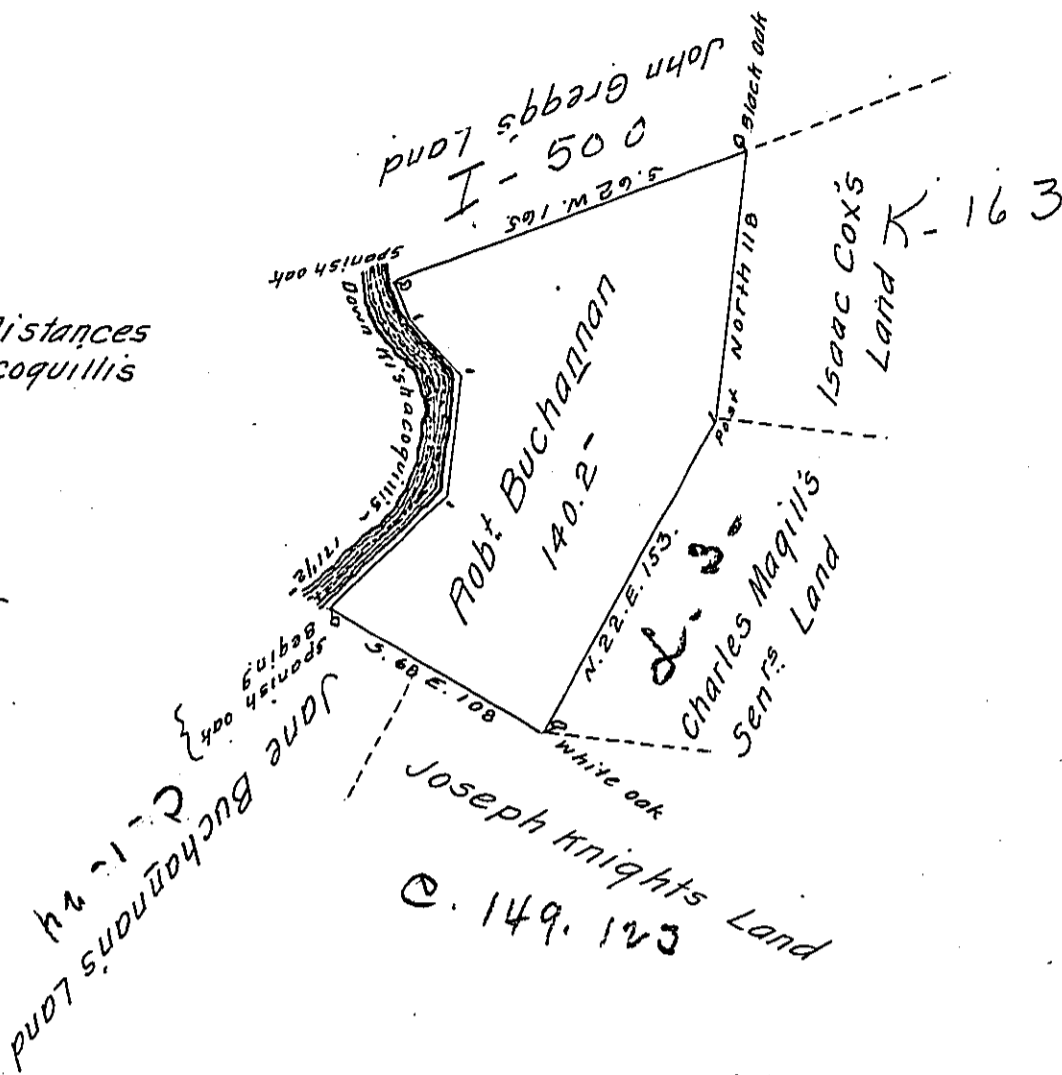


Courses & Distances
Down Kishacoquillis
Creek

S 30 E 19
S 47 E 33
South 48 1/2
S 38 W 58
S 47 W 13
171 1/2



The Draught of a Tract of Land called — situate on Kishacoquillis
 Creek in the County of Cumberland, containing One Hundred Forty Acres
 45 Perches with the usual Allowance of Six Acres & Cent for Roads.
 Survey'd the 25th day of October Anno Dom. 1766. In Pursuance of a
 Warrant From the Honble Proprietaries to Robert Buchanan. Bearing
 Date at Philad^a the 2nd day of July Anno Dom. 1762.

To John Lukens Esq^r S.G. } P. W^m Maclay D.S.
 of Pennsylvania.

IN TESTIMONY that the above is a copy of the original remaining on file in
 the Department of Internal Affairs of Pennsylvania, made
 conformably to an Act of Assembly approved the 16th day of
 February, 1833, I have hereunto set my Hand and caused
 the Seal of said Department to be affixed at Harrisburg,
 this second day of August 1910.

Nearry Houch
 Secretary of Internal Affairs.